

**INSTRUMENT
APPROACH
CHART - ICAO**

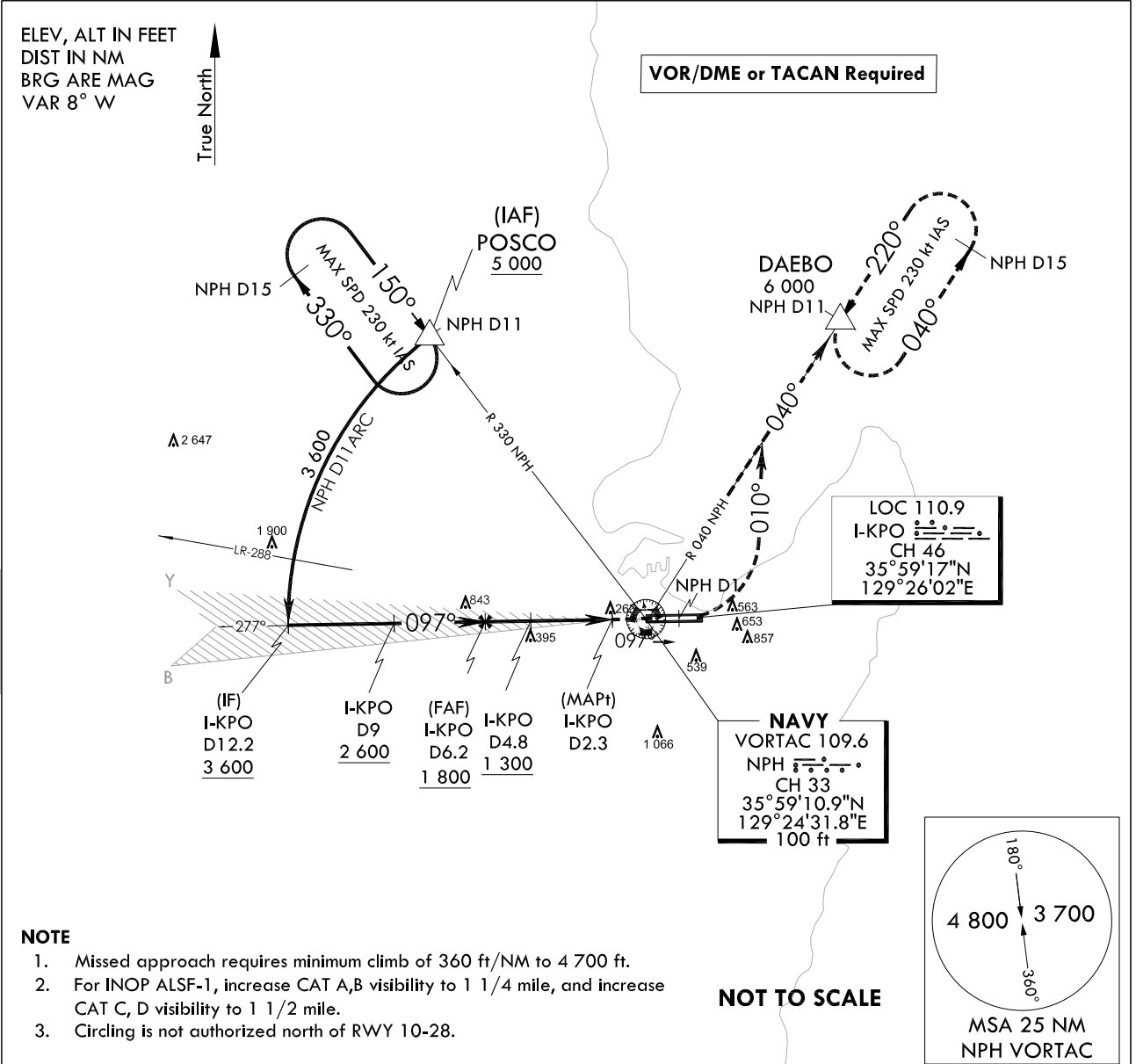
AERODROME ELVE 76 ft
HEIGHTS RELATED TO
THR RWY 10 - ELEV 76 ft
HIGHEST ELEV TDZ 76 ft

POHANG APP	124.25	120.2
POHANG TWR	232.4	236.6
	118.05	308.50

POHANG/Pohang(RKTH)

LOC/DME RWY 10

Note : Approach and circle-to-land under U.S TERPS.



NOTE

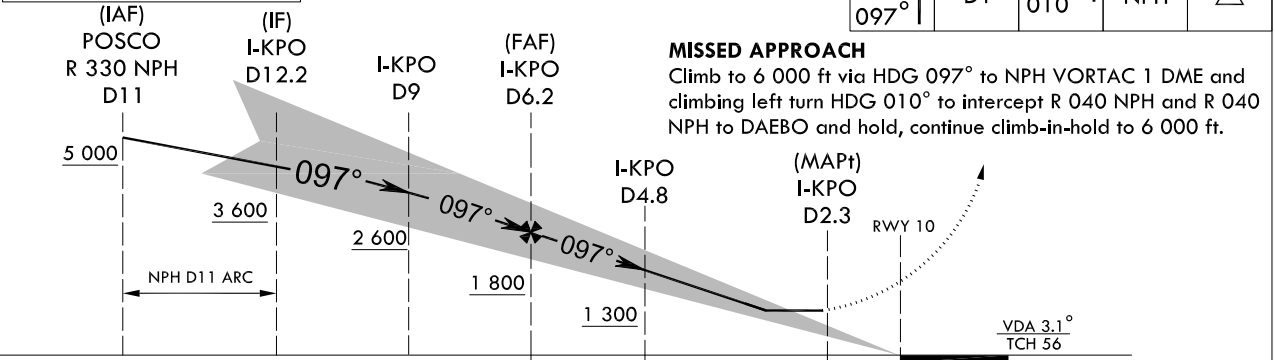
1. Missed approach requires minimum climb of 360 ft/NM to 4 700 ft.
2. For INOP ALSF-1, increase CAT A,B visibility to 1 1/4 mile, and increase CAT C, D visibility to 1 1/2 mile.
3. Circling is not authorized north of RWY 10-28.

NOT TO SCALE

TRANSITION ALT 14 000
TRANSITION LVL FL 140

Note : VGSI and descent angles not coincident (VGSI Angle 3.00° TCH 49).

6 000	NHP	HDG	R 040	DAEB0
HDG	D1	010°	NPH	△
097°				



Note : Use I-KPO DME when on the localizer course.

CATEGORY	A	B	C	D
S-LOC 10	600-3/4 524(600-3/4)		600-1 524(600 - 1)	
CIRCLING	940-1 5/8 864(900-1 5/8)	1 000-1 5/8 924(1 000- 1 5/8)	1 160-3 1 084(1 100-3)	1 440-3 1 364(1 400-3)

Change : Amended ILS plan view symbol.

INTENTIONALLY

LEFT

BLANK

**INSTRUMENT
APPROACH
CHART - ICAO**

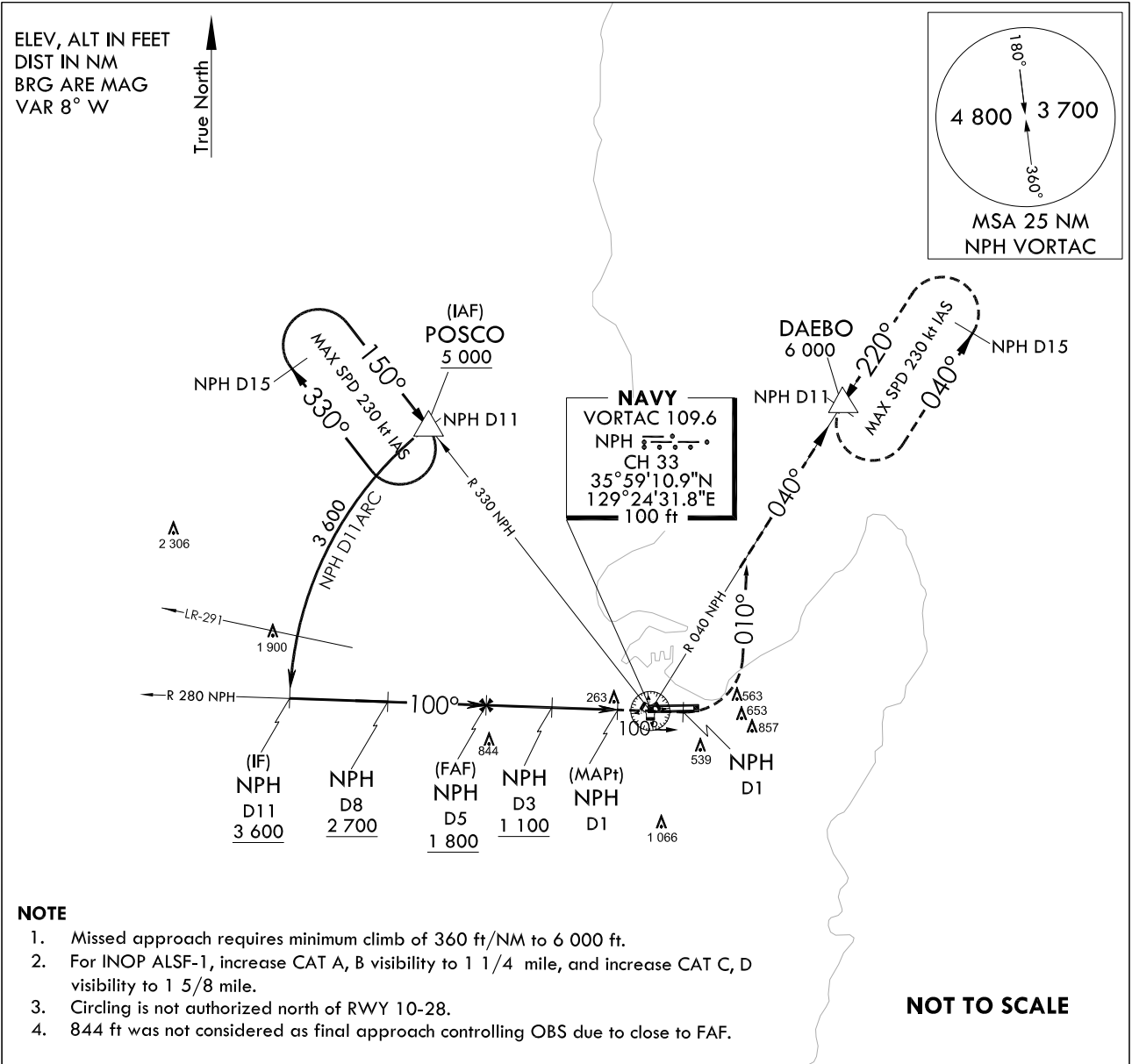
AERODROME ELVE 76 ft
HEIGHTS RELATED TO
THR RWY 10 - ELEV 76 ft
HIGHEST ELEV TDZ 76 ft

POHANG APP	124.25	120.2
POHANG TWR	118.05	236.6
	308.50	

POHANG/Pohang(RKTH)

**VOR/DME or TACAN
RWY 10**

Note : Approach and circle-to-land under U.S TERPS.



TRANSITION ALT 14 000	TRANSITION LVL FL 140	6 000 HDG 100°	NHP D1	HDG 010°	R 040 NPH	DAEBO △
(IAF) POSCO R 330 NPH D11	(IF) NPH R 280 NPH D11	NPH D8	(FAF) NPH D5	NPH D3	(MAPt) NPH D1	RWY 10
5 000	3 600	2 700	1 800	1 100		
100°		100°		100°		
NPH D11 ARC		2.0 NM		2.0 NM		0.98 NM
VDA 3.06°		TCH 56				
CATEGORY	A	B	C	D		
S-VORTAC 28	620 - 3/4	544(600 - 3/4)	620 - 1 1/8	544(600 - 1 1/8)		
CIRCLING	940 - 1 1/4 864(900 1 1/4)	1 000 - 1 1/4 924(1000 - 1 1/4)	1 160 - 3 1 084(1 100 - 3)	1 440 - 3 1 364(1 400 - 3)		

MISSED APPROACH
Climb to 6 000 ft via HDG 100° to NPH VORTAC 1 DME and climbing left turn HDG 010° to intercept R 040 NPH and R 040 NPH to DAEBO and hold, continue climb-in-hold to 6 000 ft.

NOTE : VGSI and RNAV glidepath not coincident. (VGSI Angle 3.00° TCH 49)

Change : Page control.

INTENTIONALLY

LEFT

BLANK

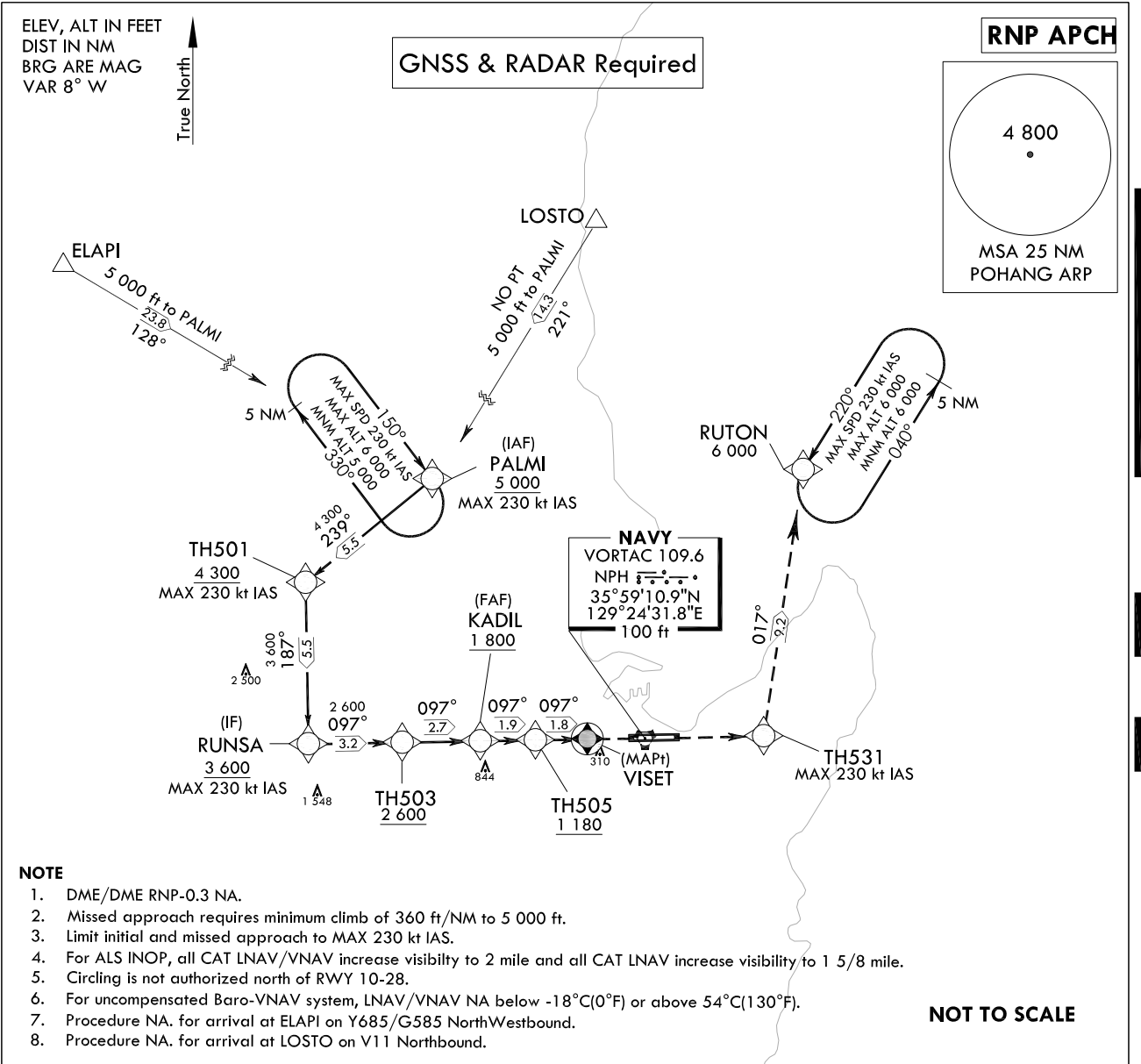
**INSTRUMENT
 APPROACH
 CHART - ICAO**

AERODROME ELVE 76 ft
HEIGHTS RELATED TO
THR RWY 10 - ELEV 76 ft
HIGHEST ELEV TDZ 76 ft

POHANG APP	124.25	120.2
	232.4	
POHANG TWR	118.05	236.6
	308.50	

POHANG/Pohang(RKTH)
RNP RWY 10

Note : Approach under U.S TERPS.



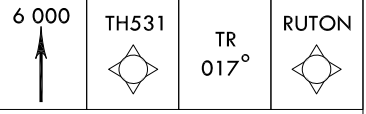
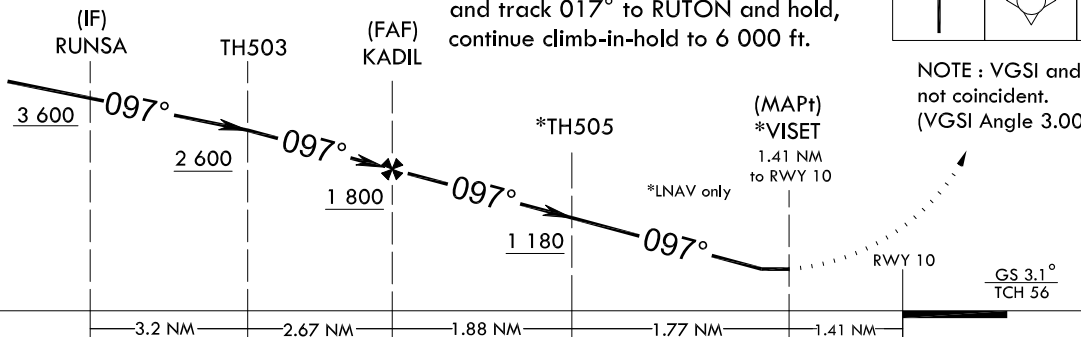
NOTE

1. DME/DME RNP-0.3 NA.
2. Missed approach requires minimum climb of 360 ft/NM to 5 000 ft.
3. Limit initial and missed approach to MAX 230 kt IAS.
4. For ALS INOP, all CAT LNAV/VNAV increase visibility to 2 mile and all CAT LNAV increase visibility to 1 5/8 mile.
5. Circling is not authorized north of RWY 10-28.
6. For uncompensated Baro-VNAV system, LNAV/VNAV NA below -18°C(0°F) or above 54°C(130°F).
7. Procedure NA. for arrival at ELAPI on Y685/G585 NorthWestbound.
8. Procedure NA. for arrival at LOSTO on V11 Northbound.

TRANSITION ALT 14 000
 TRANSITION LVL FL 140

MISSED APPROACH

Climb to 6 000 ft via direct to TH531 and track 017° to RUTON and hold, continue climb-in-hold to 6 000 ft.



NOTE : VGSI and RNAV glidepath not coincident.
 (VGSI Angle 3.00° TCH 49)

CATEGORY	A	B	C	D
LNAV/VNAV DA		696 - 1 5/8	620(700 - 1 5/8)	
LNAV MDA		620 - 1 1/4	544(600 - 1 1/4)	
C CIRCLING	940 - 1 5/8 864(900 - 1 5/8)	1 000 - 1 5/8 924(1 000 - 1 5/8)	1 160 - 3 1 084(1 100 - 3)	1 440 - 3 1 364(1 400 - 3)

Change : Information of fix name(DOGMA, HADID, MARIN, NAVAL, TEMOS → RUNSA, KADIL, RUTON, PALMI, VISET).

POHANG/pohang(RKTH)

RNP RWY 10

AERONAUTICAL DATA TABULATION

Instrument Approach Procedure Coding Tables

RNP RWY 10 - via ELAPI to PALMI(IAF)

Serial Number	Path Descriptor	Waypoint Identifier	Fly-over	Course/Track °M(°T)	Distance (NM)	Turn direction	Altitude (ft)	Speed (kt)	Coordinates	VPA/TCH	Navigation specification	Remarks
001	-	ELAPI	-	-	-	-	-	-	36°20'14.1"N 128°50'50.9"E	-	RNAV 1	-
002	TF	PALMI	-	128 (120.2)	23.8	-	+5 000	-	36°08'10.4"N 129°16'16.6"E	-	RNAV 1	IAF

RNP RWY 10 - via LOSTO to PALMI(IAF)

Serial Number	Path Descriptor	Waypoint Identifier	Fly-over	Course/Track °M(°T)	Distance (NM)	Turn direction	Altitude (ft)	Speed (kt)	Coordinates	VPA/TCH	Navigation specification	Remarks
001	-	LOSTO	-	-	-	-	-	-	36°20'15.8"N 129°25'48.3"E	-	RNAV 1	-
002	TF	PALMI	-	221(212.6)	14.3	-	+5 000	-	36°08'10.4"N 129°16'16.6"E	-	RNAV 1	IAF

RNP RWY10 - PALMI to RUTON

Serial Number	Path Descriptor	Waypoint Identifier	Fly-over	Course/Track °M(°T)	Distance (NM)	Turn direction	Altitude (ft)	Speed (kt)	Coordinates	VPA/TCH	Navigation specification	Remarks
001	-	PALMI	-	-	-	-	+5 000	-230	36°08'10.4"N 129°16'16.6"E	-	RNAV 1	IAF Bank Angle 23°
002	TF	TH501	-	239 (230.8)	5.5	-	+4 300	-230	36°04'38.0"N 129°10'55.6"E	-	RNAV 1	Bank Angle 23°
003	TF	RUNSA	-	187(179.1)	5.5	-	+3 600	-230	35°59'06.5"N 129°11'02.0"E	-	RNAV 1	IF Bank Angle 23°
004	TF	TH503	-	097(089.1)	3.2	-	+2 600	-	35°59'09.5"N 129°14'58.6"E	-	RNAV 1	-
005	TF	KADIL	-	097(089.1)	2.7	-	+1 800	-	35°59'11.9"N 129°18'15.9"E	-	RNP APCH	FAF
006	TF	TH505	-	097(089.2)	1.9	-	+1 180	-	35°59'13.5"N 129°20'35.2"E	-	RNP APCH	(LNAV only)
007	TF	VISET	Y	097(089.2)	1.8	-	+620	-	35°59'15.0"N 129°22'46.2"E	-	RNP APCH	MAP(LNAV only)
008	DF	TH531	-	-	-	-	-	-230	35°59'19.7"N 129°30'11.8"E	-	RNAV 1	CG 360 ft/NM to 6 000
009	TF	RUTON	-	017(008.7)	9.2	-	6 000	-230	36°08'26.0"N 129°31'55.0"E	-	RNAV 1	-
010	HM	RUTON	-	40	-	L	6 000	-230	36°08'26.0"N 129°31'55.0"E	-	RNAV 1	-

HOLDING PROCEDURE

Holding Identification	Path Descriptor	Waypoint Identifier	Fly-over	Course/Track °M(°T)	Distance (NM)	Turn direction	Altitude (ft)	Speed (kt)	Coordinates	VPA/TCH	Navigation specification	Remarks
RNP RWY 10	HM	PALMI	-	150	5	R	-6 000 +5 000	-230	36°08'10.4"N 129°16'16.6"E	-	RNAV 1	Inbound Leg
	HM	RUTON	-	220	5	L	6 000	-230	36°08'26.0"N 129°31'55.0"E	-	RNAV 1	Inbound Leg

Change : Information of fix name(DOGMA, HADID, MARIN, NAVAL, TEMOS → RUNSA, KADIL, RUTON, PALMI, VISET).

**INSTRUMENT
APPROACH
CHART - ICAO**

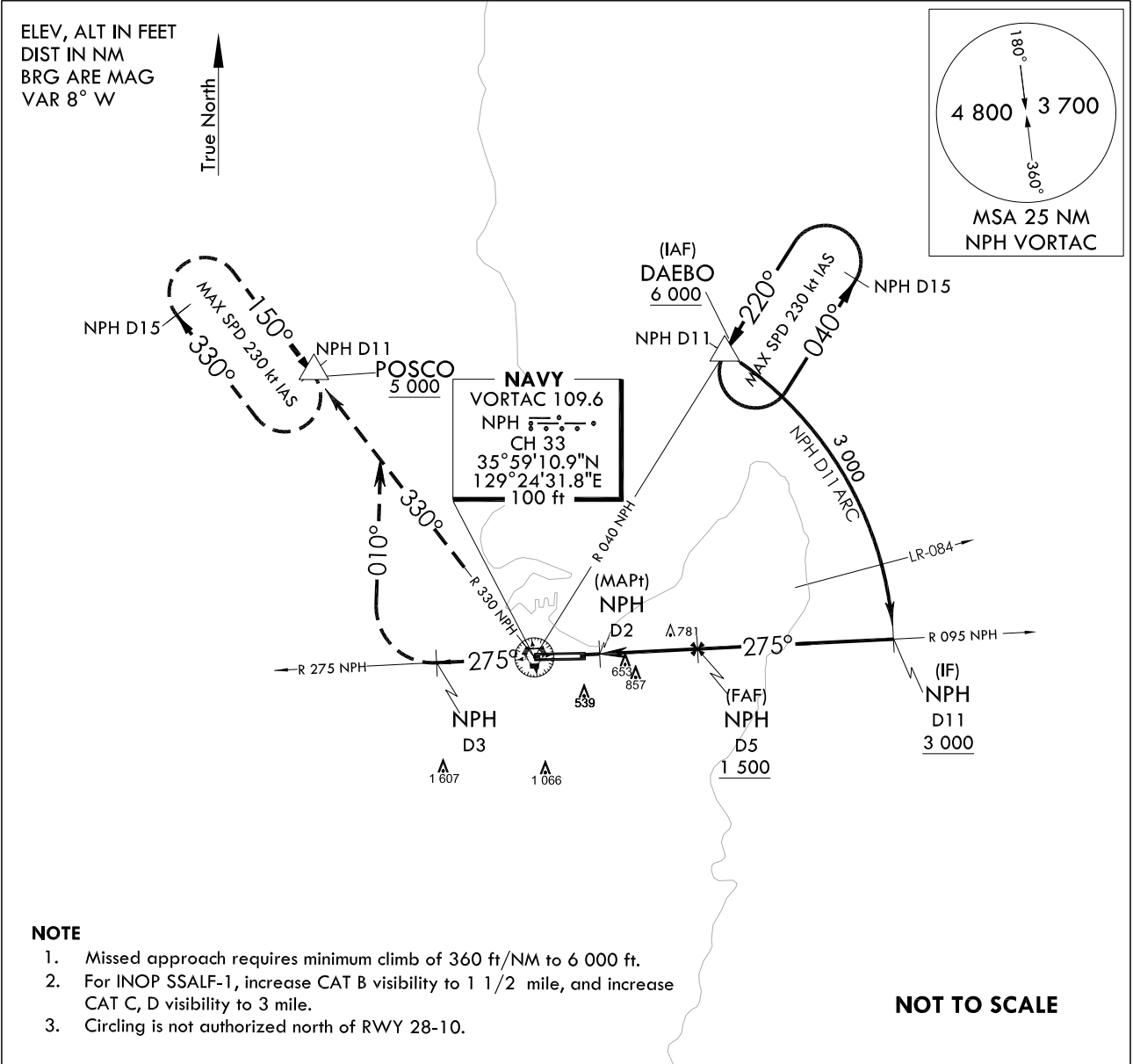
AERODROME ELVE 76 ft
HEIGHTS RELATED TO
THR RWY 28 - ELEV **62 ft**
HIGHEST ELEV TDZ **70 ft**

POHANG APP	124.25	120.2
	232.4	
POHANG TWR	118.05	236.6
	308.50	

POHANG/Pohang(RKTH)

**VOR/DME or TACAN
RWY 28**

Note : Approach and circle-to-land under U.S TERPS.



NOTE

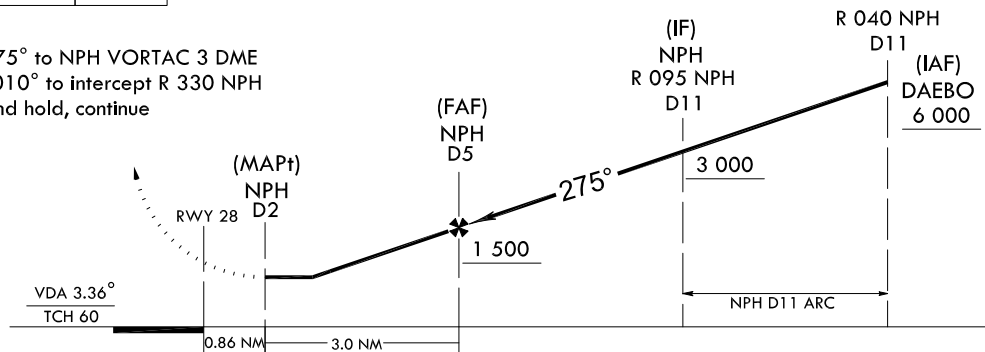
1. Missed approach requires minimum climb of 360 ft/NM to 6 000 ft.
2. For INOP SSALF-1, increase CAT B visibility to 1 1/2 mile, and increase CAT C, D visibility to 3 mile.
3. Circling is not authorized north of RWY 28-10.

NOT TO SCALE

6 000 HDG 275°	NHP D3	HDG 010°	R 330 NPH	POSCO	TRANSITION ALT 14 000 TRANSITION LVL FL 140	NOTE : VGSI and RNAV glidepath not coincident. (VGSI Angle 3.5° TCH 94)
----------------------	-----------	-------------	--------------	-------	--	--

MISSED APPROACH

Climb to 5 000 ft via HDG 275° to NPH VORTAC 3 DME and climbing right turn HDG 010° to intercept R 330 NPH and R 330 NPH to POSCO and hold, continue climb-in-hold to 5 000 ft.



CATEGORY	A	B	C	D
S-VORTAC 28	1 120 - 1 1 050(1 100 - 1)	1 120 - 1 1/4 1 050(1 100 - 1 1/4)	1 120 - 2 1/2	1 050(1 100 - 2 1/2)
CIRCLING	1 120 - 1 1/4 1 044(1 100 - 1 1/4)	1 120 - 1 1/2 1 044(1 100 - 1 1/2)	1 160 - 3 1 084(1 100 - 3)	1 440 - 3 1 364(1 400 - 3)

Change : Page control.

INTENTIONALLY

LEFT

BLANK

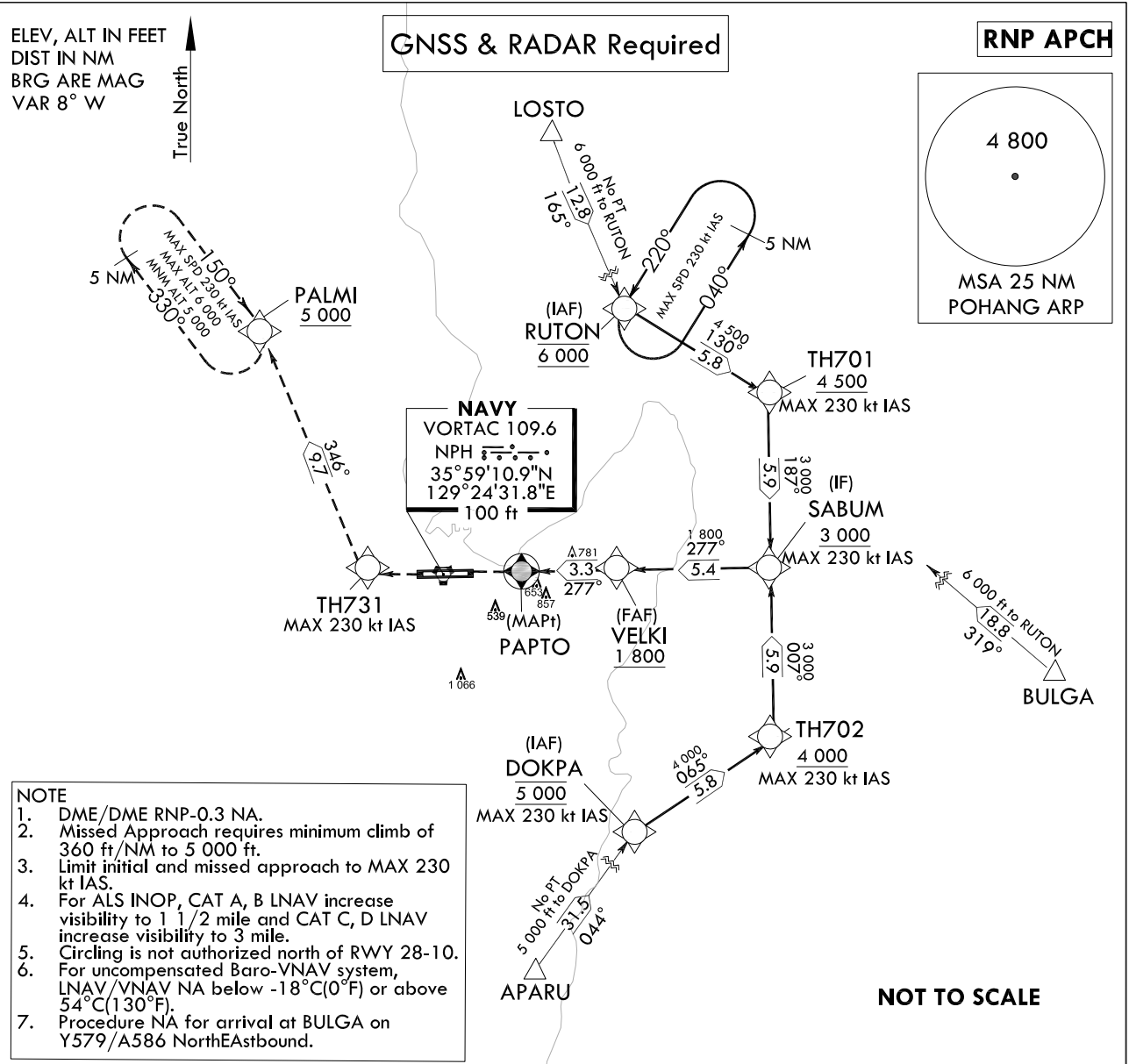
**INSTRUMENT
APPROACH
CHART - ICAO**

AERODROME ELVE 76 ft
HEIGHTS RELATED TO
THR RWY 28 - ELEV 62 ft
HIGHEST ELEV TDZ 70 ft

POHANG APP	124.25	120.2
	232.4	
POHANG TWR	118.05	236.6
	308.50	

POHANG/Pohang(RKTH)
RNP RWY 28

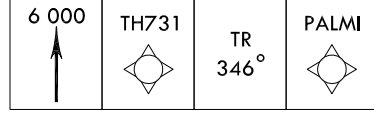
Note : Approach under U.S TERPS.



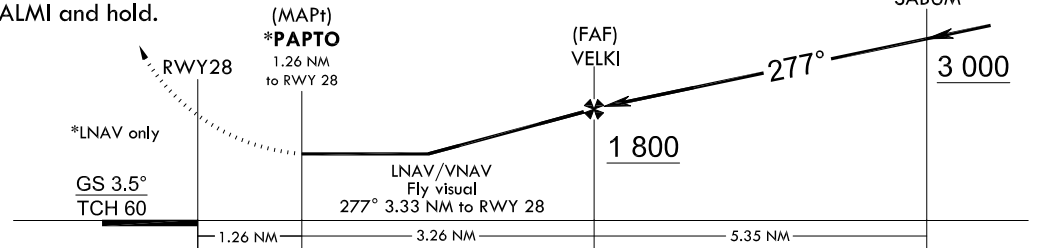
- NOTE**
1. DME/DME RNP-0.3 NA.
 2. Missed Approach requires minimum climb of 360 ft/NM to 5 000 ft.
 3. Limit initial and missed approach to MAX 230 kt IAS.
 4. For ALS INOP, CAT A, B LNAV increase visibility to 1 1/2 mile and CAT C, D LNAV increase visibility to 3 mile.
 5. Circling is not authorized north of RWY 28-10.
 6. For uncompensated Baro-VNAV system, LNAV/VNAV NA below -18°C(0°F) or above 54°C(130°F).
 7. Procedure NA for arrival at BULGA on Y579/A586 NorthEastbound.

TRANSITION ALT 14 000
TRANSITION LVL FL 140

NOTE
VGSI and RNAV glidepath not coincident.
(VGSI Angle 3.5° TCH 94)



MISSED APPROACH
Climb to 5 000 ft via direct to TH731 and track 346° to PALMI and hold.



CATEGORY	A	B	C	D
LNAV/VNAV DA	1 360 - 3 1 290(1 300-3)			
LNAV MDA	1 120 - 1 11/4 1 050(1 100 - 1 11/4)		1 120 - 2 1/2 1 050(1 100 - 2 1/2)	
CIRCLING	1 120 - 1 11/2 1 044(1 100 - 1 11/2)		1 160 - 3 1 084(1 100 - 3) 1 440 - 3 1 364(1 400 - 3)	

Change : Information of fix name(DERBE, DOKDO, GAISA, HOGOK, MARIN, NAVAL → SABUM, DOKPA, PAPT0, VELKI, RUTON, PALMI).

POHANG/pohang(RKTH)
RNP RWY 28

AERONAUTICAL DATA TABULATION

Instrument Approach Procedure Coding Tables

RNP RWY 28 - via LOSTO to RUTON(IAF)

Serial Number	Path Descriptor	Waypoint Identifier	Fly-over	Course/Track °M(°T)	Distance (NM)	Turn direction	Altitude (ft)	Speed (kt)	Coordinates	VPA/TCH	Navigation specification	Remarks
001	-	LOSTO	-	-	-	-	-	-	36°20'15.8"N 129°25'48.3"E	-	RNAV 1	-
002	TF	RUTON	-	165 (157.3)	12.8	-	@6 000	-	36°08'26.0"N 129°31'55.0"E	-	RNAV 1	IAF

RNP RWY 28 - via BULGA to RUTON(IAF)

Serial Number	Path Descriptor	Waypoint Identifier	Fly-over	Course/Track °M(°T)	Distance (NM)	Turn direction	Altitude (ft)	Speed (kt)	Coordinates	VPA/TCH	Navigation specification	Remarks
001	-	BULGA	-	-	-	-	-	-	35°56'08.6"N 129°49'24.4"E	-	RNAV 1	-
002	TF	RUTON	-	319 (311.0)	18.8	-	@6 000	-	36°08'26.0"N 129°31'55.0"E	-	RNAV 1	IAF

RNP RWY 28 - via APARU to DOKPA(IAF)

Serial Number	Path Descriptor	Waypoint Identifier	Fly-over	Course/Track °M(°T)	Distance (NM)	Turn direction	Altitude (ft)	Speed (kt)	Coordinates	VPA/TCH	Navigation specification	Remarks
001	-	APARU	-	-	-	-	-	-	35°24'42.1"N 129°09'32.1"E	-	RNAV 1	-
002	TF	DOKPA	-	044 (035.8)	31.5	-	@5 000	-	35°50'15.6"N 129°32'11.3"E	-	RNAV 1	IAF

RNP RWY 28 - via RUTON to SABUM(IF)

Serial Number	Path Descriptor	Waypoint Identifier	Fly-over	Course/Track °M(°T)	Distance (NM)	Turn direction	Altitude (ft)	Speed (kt)	Coordinates	VPA/TCH	Navigation specification	Remarks
001	-	RUTON	-	-	-	-	@6 000	-230	36°08'26.0"N 129°31'55.0"E	-	RNP APCH	IAF Bank Angle 23°
002	TF	TH701	-	130(122.1)	5.8	-	+4 500	-230	36°05'19.8"N 129°38'00.3"E	-	RNP APCH	Bank Angle 23°
003	TF	SABUM	-	187(179.4)	5.9	-	+3 000	-230	35°59'24.2"N 129°38'05.2"E	-	RNP APCH	IF Bank Angle 23°

RNP RWY 28 - via DOKPA to SABUM(IF)

Serial Number	Path Descriptor	Waypoint Identifier	Fly-over	Course/Track °M(°T)	Distance (NM)	Turn direction	Altitude (ft)	Speed (kt)	Coordinates	VPA/TCH	Navigation specification	Remarks
001	-	DOKPA	-	-	-	-	@5 000	-230	35°50'15.6"N 129°32'11.3"E	-	RNP APCH	IAF Bank Angle 23°
002	TF	TH702	-	065(056.5)	5.8	-	+4 000	-230	35°53'28.7"N 129°38'10.1"E	-	RNP APCH	Bank Angle 23°
003	TF	SABUM	-	007(359.4)	5.9	-	+3 000	-230	35°59'24.2"N 129°38'05.2"E	-	RNP APCH	IF Bank Angle 23°

Change : Information of fix name(DERBE, DOKDO, MARIN → SABUM, DOKPA, RUTON).

AERONAUTICAL DATA TABULATION

Instrument Approach Procedure Coding Tables

RNP RWY 28 - via SABUM to MAPT

Serial Number	Path Descriptor	Waypoint Identifier	Fly-over	Course/Track °M(°T)	Distance (NM)	Turn direction	Altitude (ft)	Speed (kt)	Coordinates	VPA/TCH	Navigation specification	Remarks
001	TF	SABUM	-	-	-	-	+3 000	-230	35°59'24.2"N 129°38'05.2"E	-	RNP APCH	FAF Bank Angle 23°
002	TF	VELKI	-	277(269.4)	5.4	-	+1 800	-	35°59'20.5"N 129°31'29.9"E	-	RNP APCH	(LNAV only)
003	TF	PAPTO	Y	277(269.3)	3.3	-	+1 120	-	35°59'18.0"N 129°27'29.1"E	-	RNP APCH	MAP(LNAV only)
004	DF	TH731	-	-	-	-	-	-230	35°59'13.7"N 129°20'49.9"E	-	RNAV 1	CG 360 ft/NM to 5 000
005	TF	PALMI	-	346(337.6)	9.7	-	+5 000	-230	36°08'10.4"N 129°16'16.6"E	-	RNAV 1	-
006	TF	PALMI	-	330	-	R	-6 000 +5 000	-230	36°08'10.4"N 129°16'16.6"E	-	RNAV 1	-

HOLDING PROCEDURE

Holding Identification	Path Descriptor	Waypoint Identifier	Fly-over	Course/Track °M(°T)	Distance (NM)	Turn direction	Altitude (ft)	Speed (kt)	Coordinates	VPA/TCH	Navigation specification	Remarks
RNP RWY 28	HM	PALMI	-	150	5	R	-6 000 +5 000	-230	36°07'58.0"N 129°16'20.0"E	-	RNAV 1	Inbound Leg
	HM	RUTON	-	220	5	L	@6 000	-230	36°08'26.0"N 129°31'55.0"E	-	RNAV 1	Inbound Leg

Change : Information of fix name(DERBE, GAISA, HOGOK, MARIN, NAVAL → SABUM, PAPTO, VELKI, RUTON, PALMI).

INTENTIONALLY

LEFT

BLANK